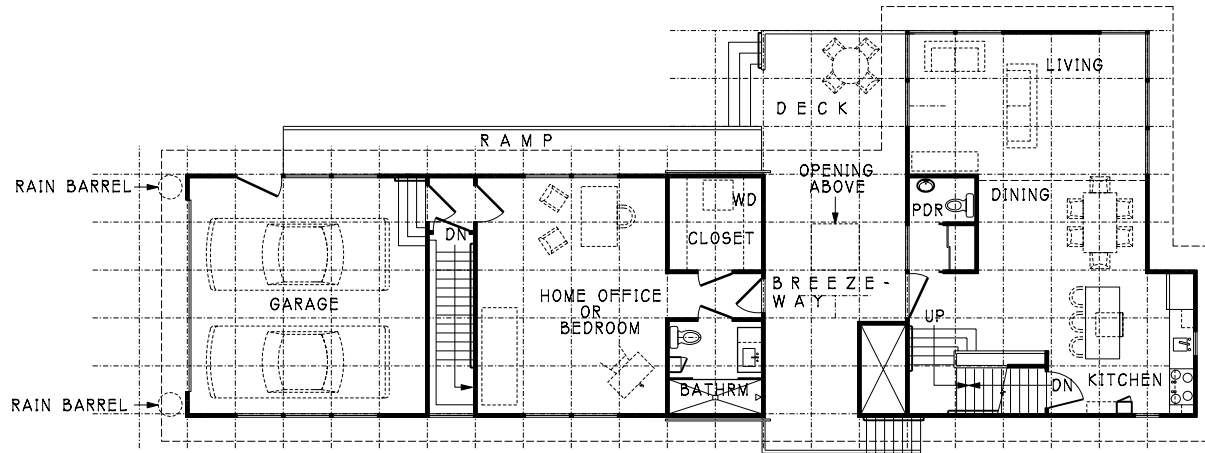


EDEN HOUSE

ATLANTA, GEORGIA



1 1ST FLOOR PLAN
A7 01 1/16" = 1'

CONCEPTS

- PLANTED GREEN ROOF: PROVIDES ADDITIONAL INSULATION, PROTECTS ROOFING, REDUCES STORMWATER RUNOFF AND PROMOTES WILDLIFE.
- WATER CONSERVATION: ROOF WATER IS COLLECTED IN RAIN BARRELS.
- PASSIVE VENTILATION: OPERABLE SKYLIGHTS ON A CHIMNEY ALLOW HOT AIR TO ESCAPE, DRAWING COOL AIR IN BEHIND. SHALLOW FLOOR PLATES & OPERABLE CASEMENT WINDOWS ALLOW CROSS VENTILATION.
- ENERGY EFFICIENCY: HOUSE IS SUPERINSULATED. WATER HEATED BY THE SUN.
- VISITABILITY: CONCRETE RAMPWAY, ZERO THRESHOLD ENTRY AND CURBLESS SHOWER RESULT IN ACCESSIBLE FIRST FLOOR
- CONSERVATION OF MATERIAL: SIDING INCLUDES RECYCLED CONTENT. PROJECT DESIGNED ON A 4' GRID. FRAMING IS FINGER JOINTED AND CUT TO LENGTH. WASTE IS RECYCLED TO MULCH FOR USE IN THE LANDSCAPE.

D.B.A.

DAVID BUTLER & ASSOCIATES, INC.

ARCHITECTURE PLANNING

212 GIBSON ST.

ATLANTA, GA. 30316

T (404) 589-0800

F (404) 581-9438

davidbutler@mindspring.com ©2007 DAVID BUTLER & ASSOCIATES, INC.

EASTWORKS, LLC

REAL ESTATE INVESTMENT & DEVELOPMENT OPPORTUNITIES

212 GIBSON STREET ATLANTA, GA 30316

T (404) 589-0800 F (404) 581-9438

DRAWING TITLE:

1ST FLOOR PLAN

DATE:

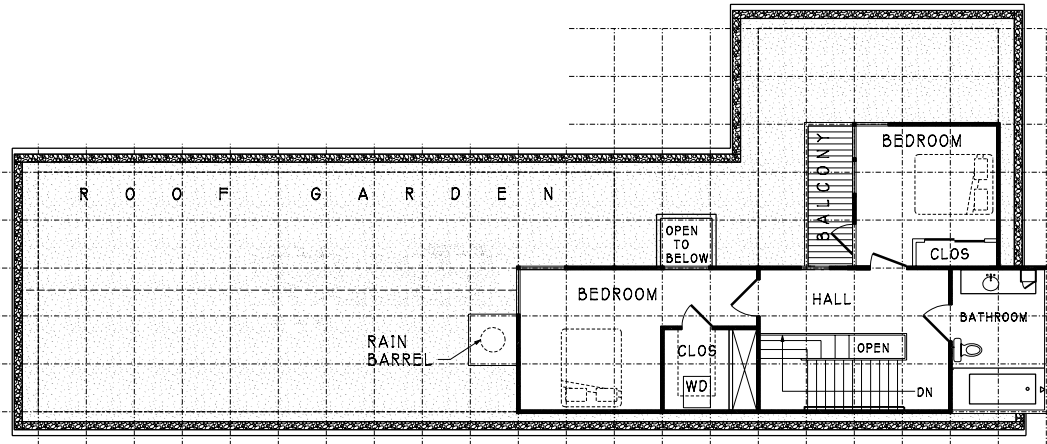
7/01/09

SHEET NAME:

A701

EDEN HOUSE

ATLANTA, GEORGIA



1
A7 02

2ND FLOOR PLAN

1/8" = 1'-0"

CONCEPTS

- PLANTED GREEN ROOF: PROVIDES ADDITIONAL INSULATION, PROTECTS ROOFING, REDUCES STORMWATER RUNOFF AND PROMOTES WILDLIFE.
- WATER CONSERVATION: ROOF WATER IS COLLECTED IN RAIN BARRELS.
- PASSIVE VENTILATION: OPERABLE SKYLIGHTS ON A CHIMNEY ALLOW HOT AIR TO ESCAPE, DRAWING COOL AIR IN BEHIND. SHALLOW FLOOR PLATES & OPERABLE CASEMENT WINDOWS ALLOW CROSS VENTILATION.
- ENERGY EFFICIENCY: HOUSE IS SUPERINSULATED. WATER HEATED BY THE SUN.
- VISITABILITY: CONCRETE RAMPWAY, ZERO THRESHOLD ENTRY AND CURBLESS SHOWER RESULT IN ACCESSIBLE FIRST FLOOR
- CONSERVATION OF MATERIAL: SIDING INCLUDES RECYCLED CONTENT. PROJECT DESIGNED ON A 4' GRID. FRAMING IS FINGER JOINTED AND CUT TO LENGTH. WASTE IS RECYCLED TO MULCH FOR USE IN THE LANDSCAPE.

D.B.A.

DAVID BUTLER & ASSOCIATES, INC.

ARCHITECTURE

PLANNING

212 GIBSON ST.

ATLANTA, GA. 30316

T (404) 589-0800

F (404) 581-9438

davidbutler@mindspring.com ©2007 DAVID BUTLER & ASSOCIATES, INC.

EASTWORKS, LLC

REAL ESTATE INVESTMENT & DEVELOPMENT OPPORTUNITIES

212 GIBSON STREET ATLANTA, GA 30316

T (404) 589-0800 F (404) 581-9438

DRAWING TITLE:

2ND FLOOR PLAN

DATE:

7/01/09

SHEET NAME:

A7 02